

HISTOLOGY PRACTICAL

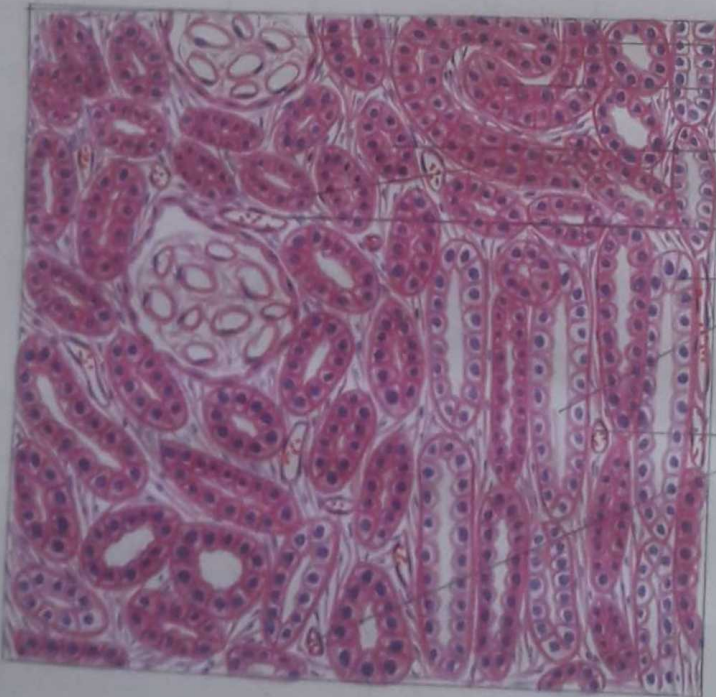
URINARY SYSTEM

2nd YEAR MBBS-MC

Dr. Zakia Sultana

6 - JULY - 2020

KIDNEYS.



RENAL CORPUSCLE

PROXIMAL CONVULATED
TUBULE

DISTAL CONVULATED TUBULE

INTERLOBULAR BLOOD VESSELS

COLLECTING TUBULE

CAPILLARIES

- KIDNEYS:

- POINTS OF IDENTIFICATION:

- i- The kidney is sub-divided into an outer "darker-staining cortex" and an inner "lighter-staining medulla".
- ii- Cortex is covered with a dense irregular connective tissue "renal capsule".
capsule =
- iii- The renal capsule consists of a ; glomerulus and "Bowman's capsule".
- iv- The cortex contains both "distal and proximal convoluted tubules", "glomeruli and "medullary rays". Present also in the cortex are the "interlobular arteries" and "interlobular veins".

QUESTION :-

URTERS



- UTERUS:

- POINTS OF IDENTIFICATION:

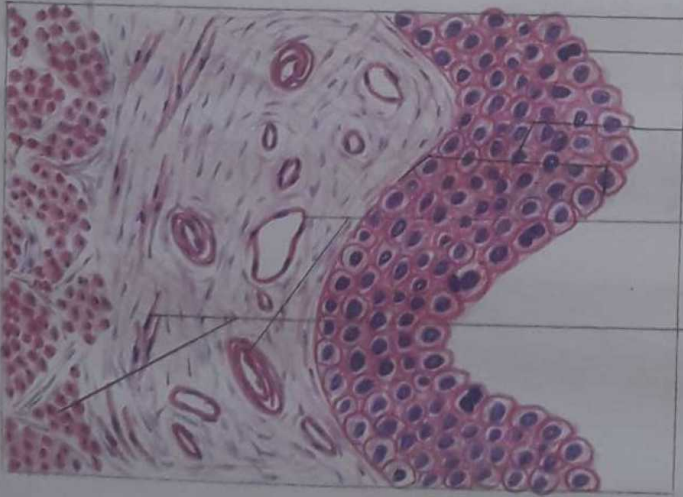
- i- The mucosa of the uterus is highly folded and lined with a thick transitional epithelium.
- ii- Below the transitional epithelium is the connective tissue lamina propria.
- iii- The muscularis of the uterus contains two smooth muscle layers;
 - inner longitudinal layer
 - Middle circular muscle layer

A third outer longitudinal layer is added to the wall in the lower third of uterus, near the bladder.

QUESTIONS

URINARY

BLADDER.



- BINUCLEATE CELL
- TRANSITIONAL EPITHELIUM
- VENULE AND ARTERIOLE
- SMOOTH MUSCLE BUNDLES

URINARY BLADDER:

POINTS OF IDENTIFICATION:

- i. The three layers of muscles are arranged in anastomosing bundle form, between which is found the "interstitial connective tissue".
- ii - Mesothelium covers the connective tissue of serosa and is the outermost layer.
- iii - The mucosa of an empty bladder exhibits numerous "mucosal folds" that "disappear during bladder distention".
- iv. The "transitional epithelium" is thicker than in the ureter and consists of about six layers of cells.