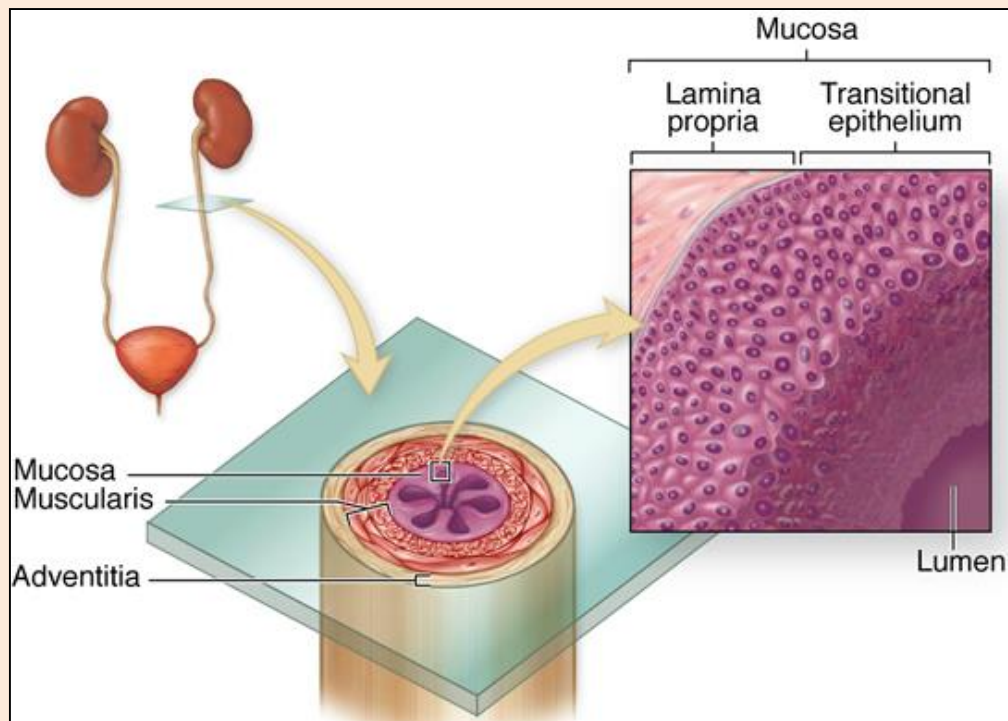
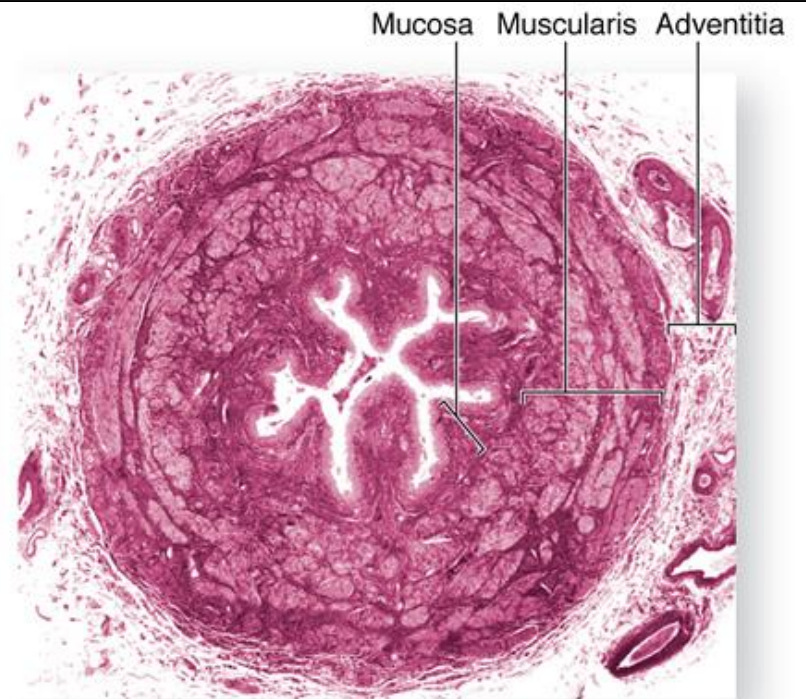


The urinary system

Dr zubair



a Ureter cross section

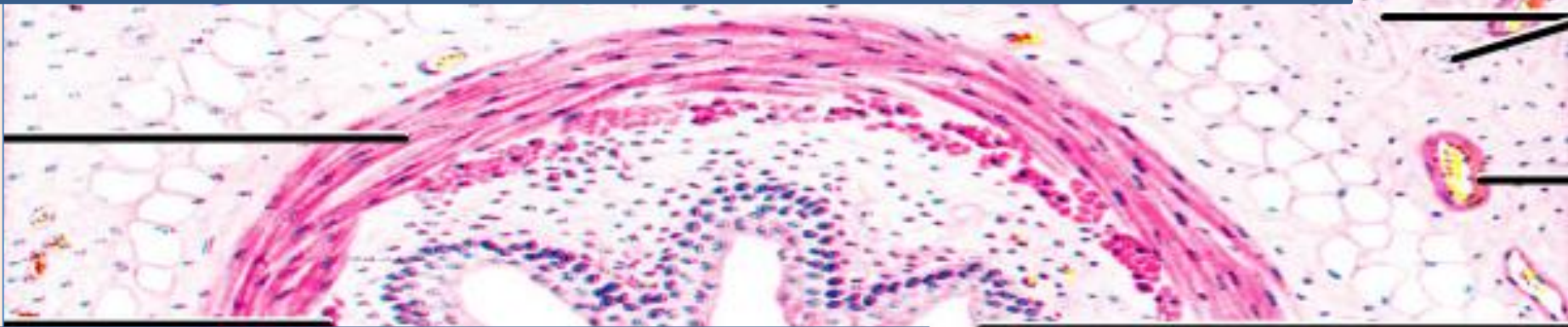


b

Ureter

Mucosa

Transitional epithelium And dense layer of fibro elastic lamina propria



Muscularis

- Inner longitudinal smooth muscle
- Outer circular smooth muscle
- in lower 1/3rd outer longitudinal smooth muscle.

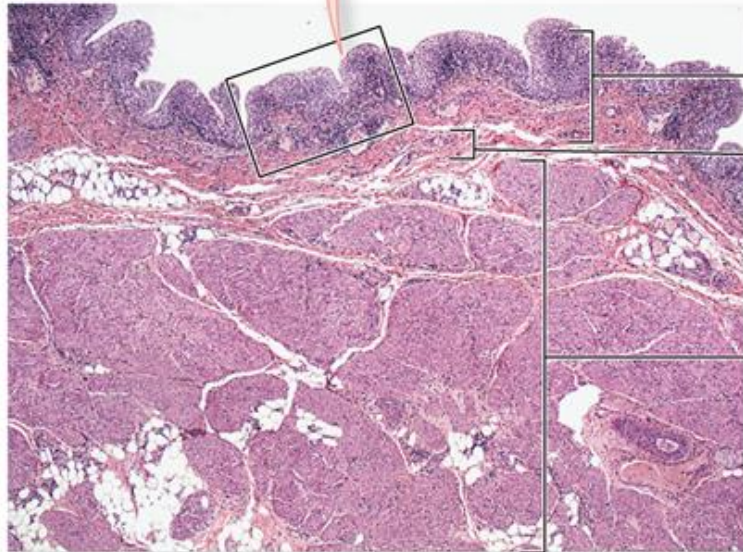
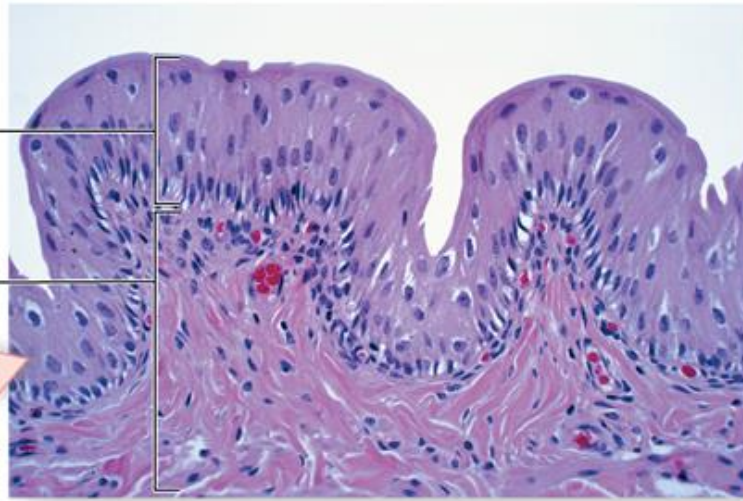


Fibrosa

Layer of loose connective tissue rich in blood vessels

Transitional epithelium

Lamina propria



Mucosa

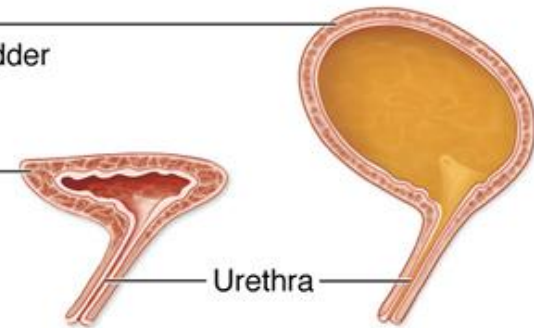
Submucosa

Detrusor muscle
of muscularis

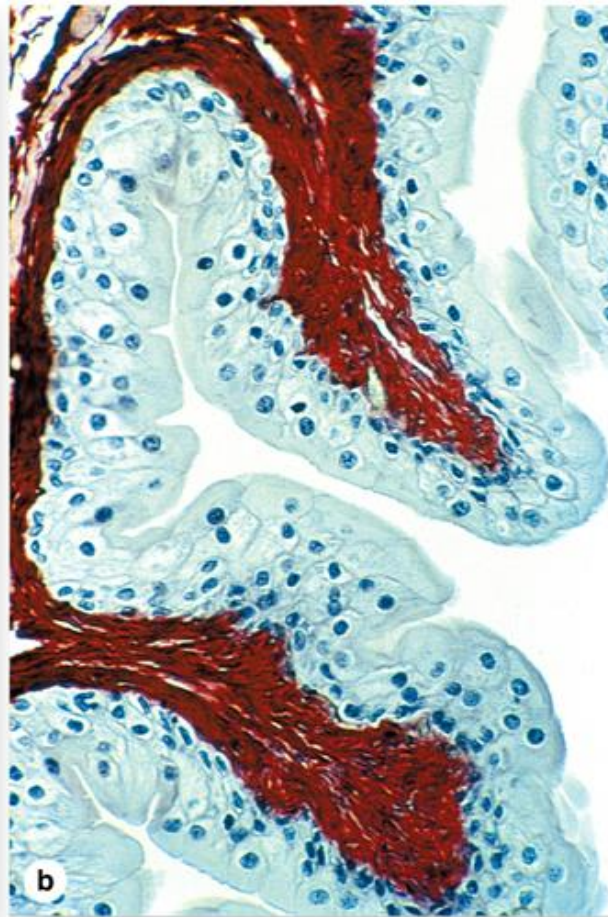
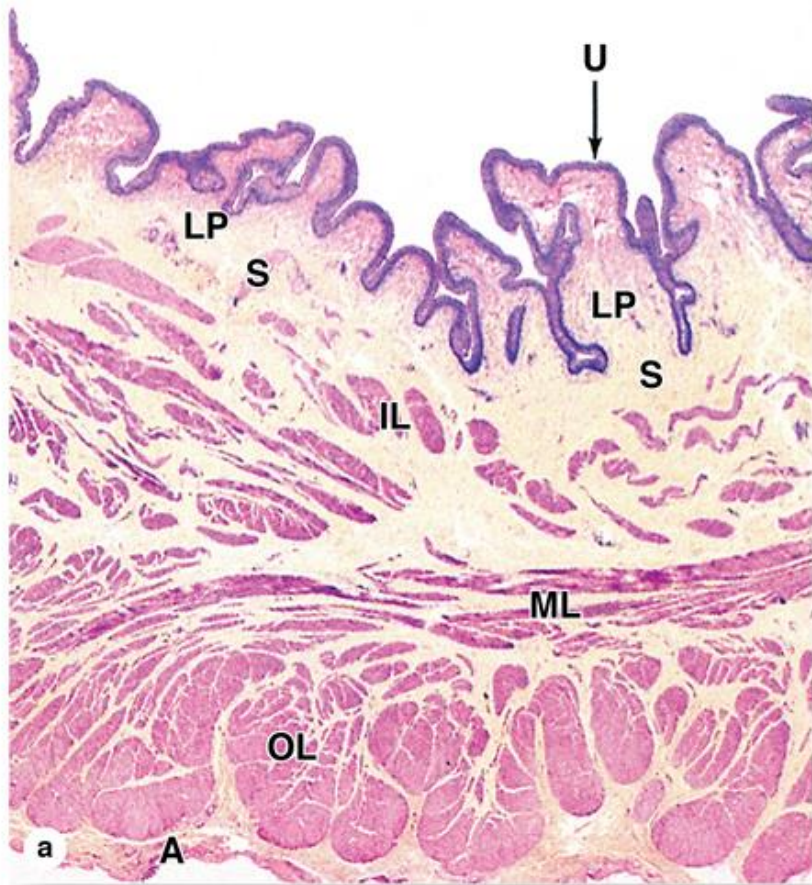
Superior wall of
distended full bladder

Superior wall of
empty bladder

Urethra



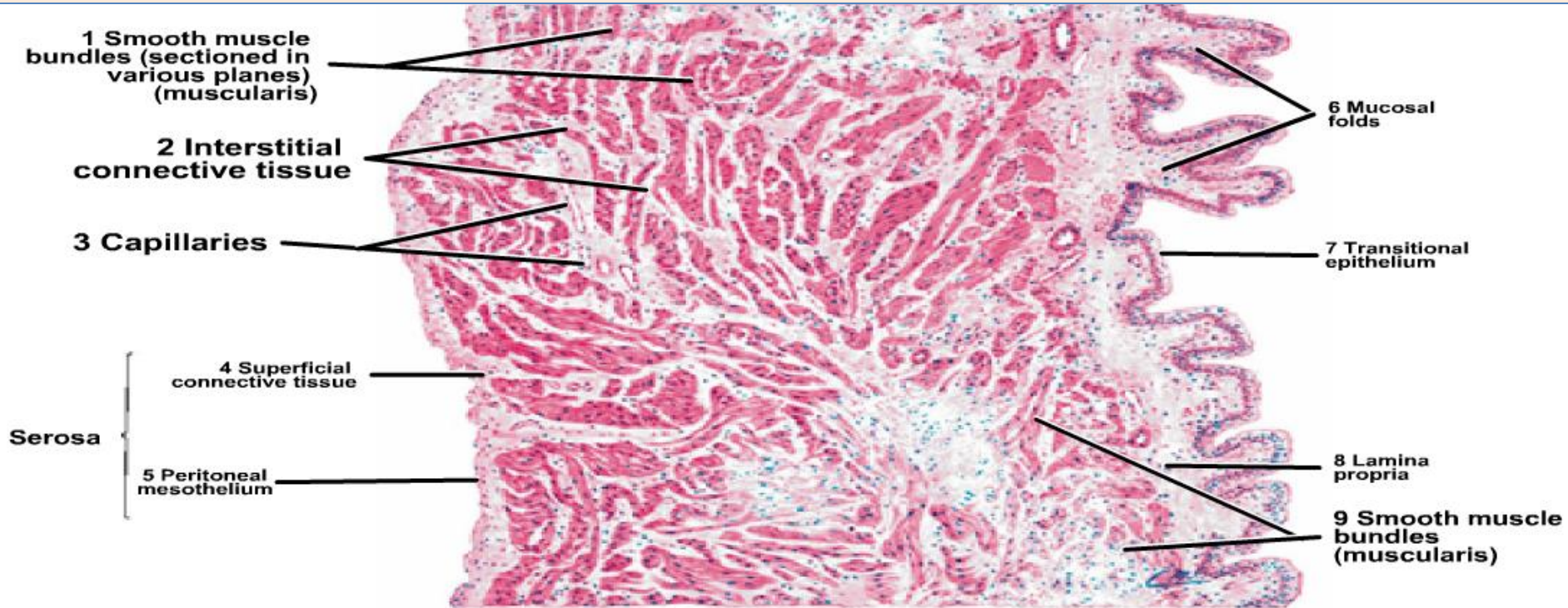
A dense collagenous lamina propria underlies the urothelium throughout the excretory passages. Neither a muscularis mucosae nor a sub mucosal layer is present in their walls



Histology of urinary bladder

Mucosa

Transitional mucosa and lamina propria is a layer of loose connective tissue



Muscularis

An inner longitudinal, middle circular and an outer longitudinal layer of smooth muscle

Fibrosa

A layer of loose connective tissue

**Submucosa
is absent**

